

# Geosphere XXL

- Solid colours
- Large format
- 6mm thick



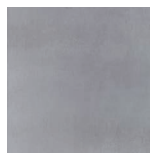
grestec.co.uk / 0345 130 2241



IMM2783  
LRV:71



IMM2784  
LRV:53



IMM2785  
LRV:25



IMM2786  
LRV:20



IMM2787  
LRV:11



IMM2788  
LRV:50

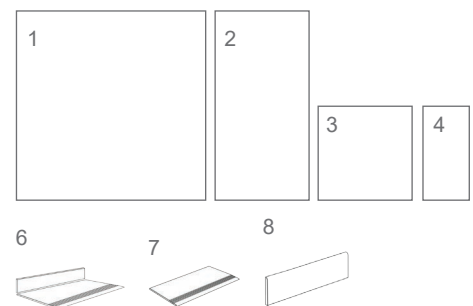


IMM2789  
LRV:33



IMM2790  
LRV:16

	SIZE	THICKNESS	FINISHES		
1	1200x1200	10MM	NAT (R10)	LAP	-
2	600x1200	10MM	NAT (R10)	LAP	-
3	600x600	10MM	NAT (R10)	LAP	HAM (R11/C)
4	300x600	10MM	NAT (R10)	-	HAM (R11/C)
5	600x1200 Steptread	10MM	-	LAP	-
6	300x600 Steptread	10MM	NAT (R10)	-	-
7	95x600 Skirting	10MM	NAT	LAP	HAM



REQUEST SAMPLES, PRINT COLOURS MAY VARY.

FIND US ON:    



GEOSPHERE XXL / IMM2783



GEOSPHERE XXL / IMM2786



GEOSPHERE XXL / IMM2787LAP



GEOSPHERE XXL / IMM2787



GEOSPHERE XXL / IMM2788



GEOSPHERE XXL / IMM2790

## Technical specification

Technical Characteristic	Standard	Average Values
Water absorption	ISO 10545-3	<0.05
Sizes	ISO 10545-2	Conforms
Appearance	ISO 10545-2	Conforms
Bending strength	ISO 10545-4	>50N/mm <sup>2</sup>
Deep abrasion resistance	ISO 10545-6	< 140 mm <sup>3</sup>
Linear expansion thermic coefficient	ISO 10545-8	<7x10 <sup>-6</sup> °C <sup>-1</sup>
Resistance to thermal shock	ISO 10545-9	Resistant
Frost resistance	ISO 10545-12	Resistant
Resistance to chemical products	ISO 10545-13	UB
Stain resistance	ISO 10545-14	Class 3
Slip resistance (Shod)	DIN 51130	Natural: R10 Bush-hammered: R11
Resistance to light	DN 51094	Conforms

## Cleaning and maintenance advice

### Initial washing

The initial washing is fundamental for good treatment results. The initial washing is aimed at removing any laying residues and building grime.

Product	Deterdek (1:5 diluted in water)
Coverage	Deterdek (5 l per 100m <sup>2</sup> )
Equipment	Single-disc professional polisher, liquid vacuum cleaner and cloth
Procedure	<ul style="list-style-type: none"> <li>• After the floor is swept and soaked with water, spread the diluted Deterdek onto the floor.</li> <li>• Then scour with single-disc professional polisher.</li> <li>• Vacuum the residue, rinse the floor well and then mop with a liquid vacuum cleaner or a cloth.</li> </ul>

### Routine maintenance

The aim of the routine maintenance is to remove dirt and scuff marks. Must be carried out regularly.

Product	Filacleaner (Diluted 1:50 in warm water)
Equipment	Cloth or mop (For large areas the use of a cleaning machine is recommended)
Procedure	<ul style="list-style-type: none"> <li>• Dilute Filacleaner in warm water</li> <li>• Wipe a cloth wet with the solution over the floor</li> <li>• Rinse the floor in case of concentrated solutions of Filacleaner</li> </ul>

### Special maintenance

Special maintenance is carried out in case of very stubborn dirt, when the routine maintenance is not enough to restore the original look of the surface.

Product	Fila PS/87 (1:5 diluted in water)
Coverage	5 l per 100m <sup>2</sup> (when diluted 1:5)
Equipment	Single-disc professional polisher
Procedure	<ul style="list-style-type: none"> <li>• Dilute Fila PS/87 in 1:5 in water</li> <li>• Apply to the floor previously soaked with water and leave for a few minutes</li> <li>• Scrub with a single disc professional polisher</li> <li>• Mop up residue with a liquid vacuum cleaner or cloth</li> </ul>

FIND US ON:

